

# FALCON STEEL

An ETG Company



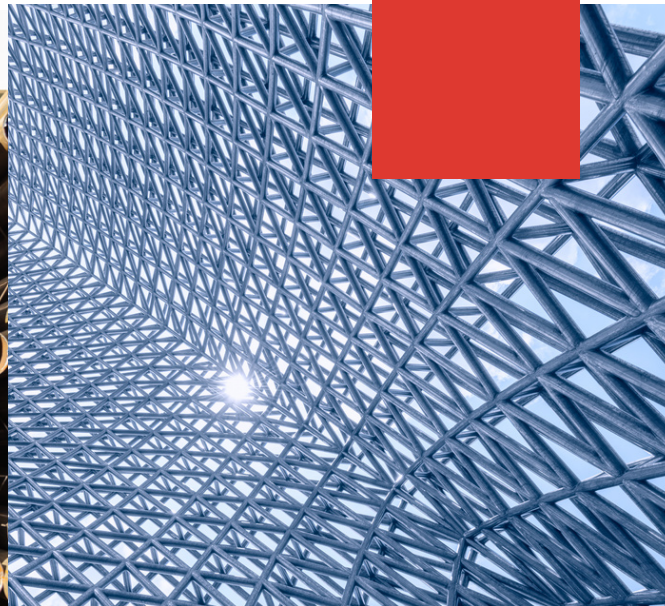
Falcon Steel is a level 1 BBBEE company wholly owned by ETG.

We are proud to be the exclusive sales, marketing and distribution channel for the complete range of products manufactured by ETG Steel Solutions in its world class facility within the Beluluane Free Trade Zone in Mozambique, less than 550kms from Johannesburg.

Falcon Steel offers its diverse customer base a comprehensive array of pipe (seamless and ERW), tubes, open sections, roofing (both corrugated and IBR profiles), plate, hot rolled coil, rebar, wire rod, angle, flat bar, square bar, high alloy round & hollow bar, IPE sections and a variety of aligned products.

The extensive African footprint of ETG together with the mature logistics infrastructure, distribution capacity and access to its global pool of Tier 1 suppliers for both raw materials and finished goods ensures we maintain our customer focused value proposition placing service and quality above all else.

2  
0  
2  
4





# PRODUCT RANGE & SERVICES

Falcon Steel places the world class manufacturing capacity of ETG Steel Solutions front and centre of the South African stage and brings its customers in the South African marketplace a rare opportunity to source quality finished goods and raw materials offered for both domestic and export sale.



## Round Pipe: Electric Resistance Welded Pipe (SAB719)

Ranging from 219mm (8 inch) pipe to 610 mm Pipe (24 inch) the ERW-HFI manufacturing process forms the steel coil to the required pipe diameter, after which high-frequency electrical current is applied to heat the pipe, fusing the skelp to form the weld. With no filler material being added, the weld joint becomes a homogenous part of the completed pipe ensuring the required engineering strength and performance specifications are consistently met and exceeded.

SABS719: Outside Pipe Diameter								
Dimensions			Wall Thickness					
			4.5	6	7	10	12.7	14.3
NB (Nominal Bore)	mm	Inches	0,177	0.236	0.315	0.394	0.500	0.563
200	219.1	8 5/8'						
250	273.1	10 3/4'						
300	323.9	12 3/4'						
350	355.6	14'						
400	406.4	16'						
450	457.2	18'						
500	508.0	20'						
550	558.8	22'						
600	609.6	24'						

- dimensions in mm
- dimensions in inches
- sizes available



### API: Outside Pipe Diameter

Dimensions			Wall Thickness							
			4.8	5.2	5.6	6.4	9.5	11.9	12.7	14.3
NB (Nominal Bore)	mm	Inches	0,188	0.203	0.219	0.250	0.375	0.469	0.5	0.563
200	219.1	8 5/8'								
250	273.1	10 3/4'								
300	323.9	12 3/4'								
350	355.6	14'								
400	406.4	16'								
450	457.2	18'								
500	508.0	20'								
550	558.8	22'								
600	609.6	24'								

- dimensions in mm
- dimensions in inches
- sizes available



Application	Specification
Oil and Gas	API 5L, ASTM A135, EN 10208 ISO 3183, GB 9711
Casing	API 5CT
Water	AWWA C200, BS 534/BS 3601, DIN 2460/DIN 1626, NFA 49-150, UNI 6363, SABS 719, ASTM A53 (A&B)
Sewerage	BS 534/BS 3601, DIN 19530, AWWA C301
Steam	API 5L, ASTM A 135, DIN 1626, IN 1628
Piling	ASTM A 252, JIS A 5525, ST/Y 5040

## Round Tube SABS 62 (SANS 657-1)

Available from 21.4mm – 168.3mm in diameter with wall thicknesses ranging from 0.9mm – 5.8mm, the pipes and tubes are available in a variety of lengths able to effectively accommodate customer and logistics requirements. Our range of tubular products are available in a wide range of materials that includes SAE1006, SAE1008, S355 and Supraform on request. Transmission pipe is supplied as Medium or Heavy 50 / 80 / 100 / 150 and clearly marked with red (heavy) or blue paint (medium) for rapid identification and accuracy of visual inventory management in rural territories and applications.



Class : Medium				
Pipe Size NB mm	Outside Diameter Max	Outside Diameter Min	Wall Thickness	Mass UNCPE KG/m
15	21.7	21.1	2.3	1.085
20	27.2	26.6	2.3	1.401
25	34.2	33.4	2.8	2.164
32	42.9	42.1	2.8	2.767
40	48.8	48	2.8	3.151
50	60.8	59.8	3.2	4.509
65	76.6	75.4	3.2	5.762
80	89.5	88.1	3.5	7.372
100	114.9	113.3	3.9	10.620
125	140.6	138.7	4.2	14.037
150	166.1	164.1	4.2	16.668

Class : Heavy				
Pipe Size NB mm	Outside Diameter Max	Outside Diameter Min	Wall Thickness	Mass UNCPE KG/m
15	21.7	21.1	2.8	1.287
20	27.2	26.6	2.8	1.671
25	34.2	33.4	3.5	2.644
32	42.9	42.1	3.5	3.398
40	48.8	48	3.5	3.878
50	60.8	59.8	3.9	5.428
65	76.6	75.4	3.9	6.955
80	89.5	88.1	4.2	8.774
100	114.9	113.3	4.7	12.705
125	140.6	138.7	4.7	15.650
150	166.1	164.1	4.7	18.594

### Markets and Application:

Mining, construction, transmission, effluent infrastructure, scaffolding and agriculture

## Round, Square and Rectangular Tube

A range of mild steel tubing in square, round, and rectangular profiles in 6 meter or 7.2 meter lengths available in a range of standard sizes required by the South African and African markets.

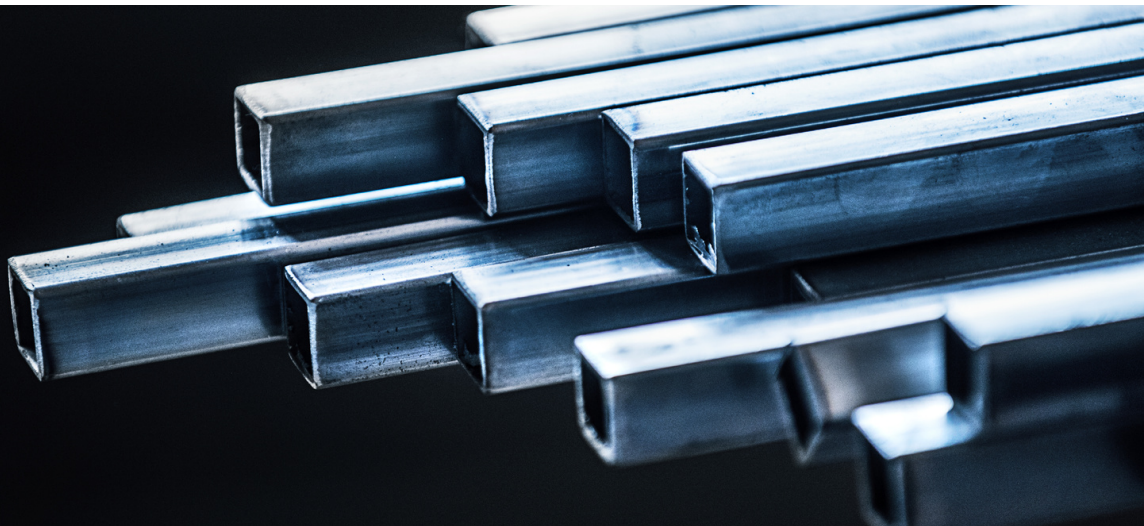
Sizes range from 17mm – 100mm in 1.6mm and 2mm wall thickness as standard.

Round Tubing 1.6mm			
Size	Length(mm)	KG/Meter	Bundle Size
16	6000	0.568	100
19	6000	0.687	100
20	6000	0.726	100
25.4	6000	0.939	100
26.9	6000	0.998	100
31.8	6000	1.192	90
33.7	6000	1.267	90
42.4	6000	1.610	61
48.3	6000	1.843	61
60.3	6000	2.316	50
70	6000	2.699	50
76.1	6000	2.939	50
88.9	6000	3.445	28
95	6000	3.685	28
101	6000	3.922	19

Round Tubing 2mm			
Size	Length(mm)	KG/Meter	Bundle Size
16	6000	0.690	100
19	6000	0.838	100
20	6000	0.888	100
25.4	6000	1.154	100
26.9	6000	1.228	100
31.8	6000	1.470	90
33.7	6000	1.563	90
42.4	6000	1.993	61
48.3	6000	2.284	61
60.3	6000	2.875	50
70	6000	3.354	50
76.1	6000	3.655	50
88.9	6000	4.286	28
95	6000	4.587	28
101	6000	4.883	19

Square Tubing 1.6mm			
Size	Length(mm)	KC/Meter	Bundle Size
16x16	6000	0.741	100
17x17	6000	0.791	100
19x19	6000	0.891	100
20x20	6000	0.942	100
25x25	6000	1.193	100
30x30	6000	1.444	100
32x32	6000	1.544	100
38x38	6000	1.846	100
40x40	6000	1.946	100
50x50	6000	2.449	50
60x60	6000	2.951	36
70x70	6000	3.453	25
76x76	6000	3.755	25
80x80	6000	3.956	25
90x90	6000	4.458	25
100x100	6000	4.961	25
101x101	6000	5.011	25

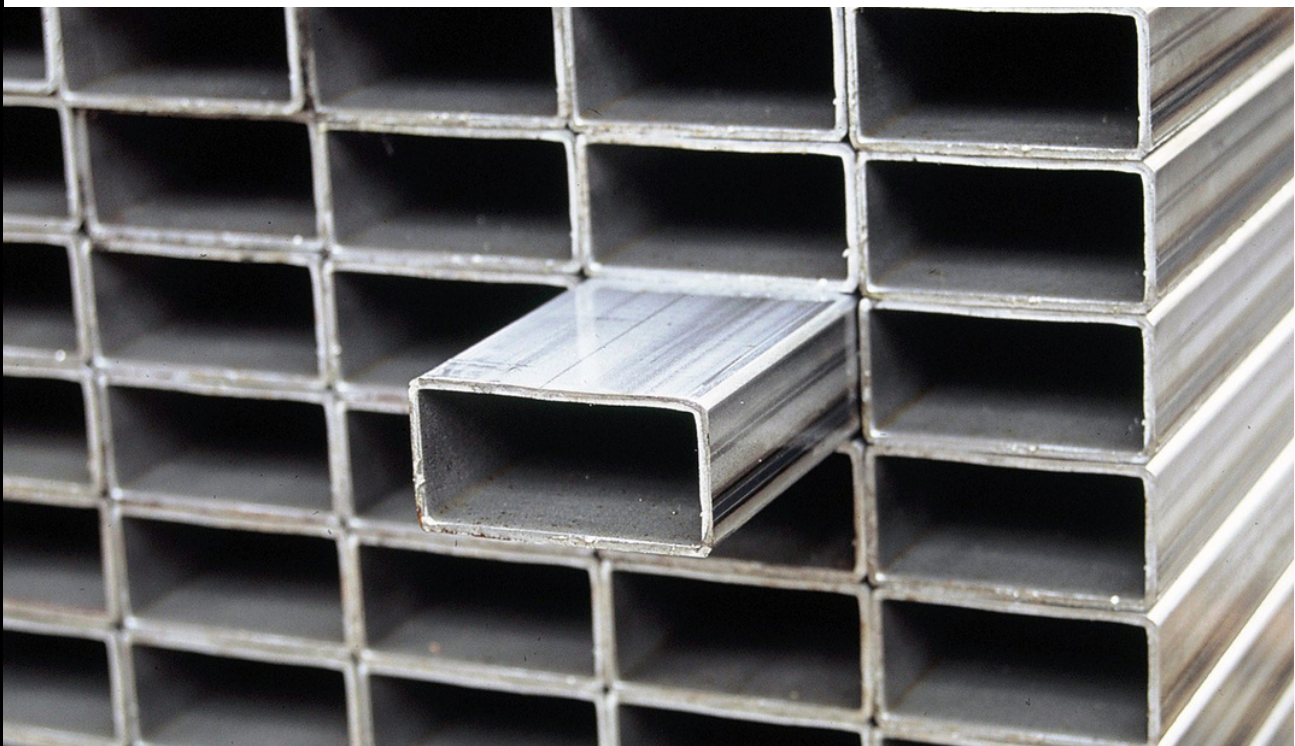
Square Tubing 1.6mm			
Size	Length(mm)	KG/Meter	Bundle Size
16x16	6000	0.906	100
17x17	6000	0.969	100
19x19	6000	1.094	100
20x20	6000	1.157	100
25x25	6000	1.471	100
30x30	6000	1.785	100
32x32	6000	1.911	100
38x38	6000	2.288	100
40x40	6000	2.413	100
50x50	6000	3.041	50
60x60	6000	3.669	36
70x70	6000	4.297	25
76x76	6000	4.674	25
80x80	6000	4.925	25
90x90	6000	5.553	25
100x100	6000	6.181	25
101x101	6000	6.244	25





Rectangle Tubing 1.6mm			
Size	Length(mm)	KG/Meter	Bundle Size
25x13	6000	0.891	100
25x50	6000	1.821	100
31.8x19	6000	1.213	90
38x25	6000	1.519	50
50x38	6000	2.147	50
60x40	6000	2.449	50
70x38	6000	2.650	48
76x25	6000	2.474	48
76x38	6000	2.800	48
76x50	6000	2.951	48
70x50	6000	3.102	48
80x40	6000	2.951	48
100x50	6000	3.102	28

Rectangle Tubing 2mm			
Size	Length(mm)	KG/Meter	Bundle Size
25x13	6000	1.094	100
25x50	6000	2.256	100
31.8x19	6000	1.496	90
38x25	6000	1.879	50
50x38	6000	2.664	50
60x40	6000	3.041	50
70x38	6000	3.292	48
76x25	6000	3.073	48
76x38	6000	3.481	48
76x50	6000	3.669	48
70x50	6000	3.858	48
80x40	6000	3.669	48
100x50	6000	4.611	28



**Markets and Application:**

Construction, hardware, manufacturing and agriculture.



## Roofing – Zincal and Colour Coated

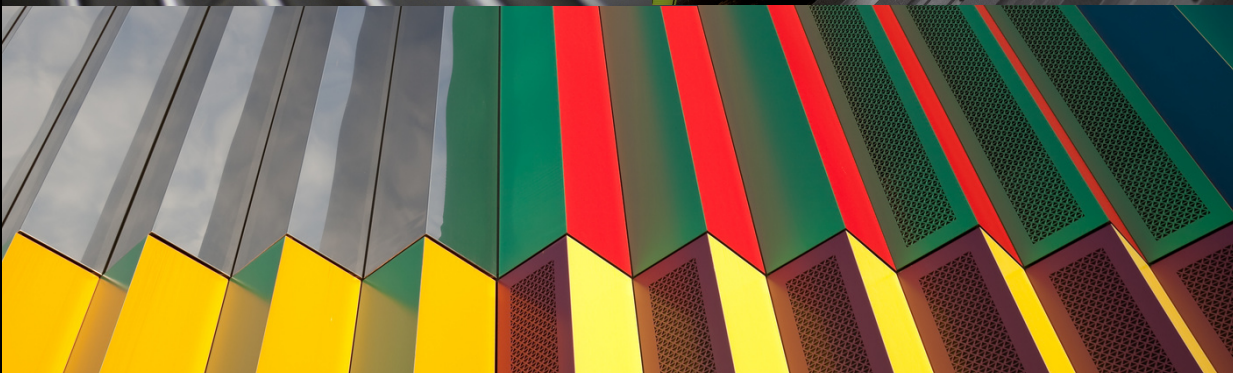
IBR and Corrugated (10.5) profiles in lengths from 3.6m to 13m.

Various thicknesses available in Galvanized, Zincal and Colour-Coated material

All material is AZ150 G550 full hard unless otherwise specified.

	Size	Mass per Meter	Length	Bundle size
<b>Corrugated Roofing Zincal</b> *10,5 Corrugated available in the above thicknesses.	0,25 x 925	1,41	1	2 tons
	0,35 x 925	1,84	1	2 tons
	0,4 x 925	2,97	1	2 tons
	0,47 x 925	3,49	1	2 tons
<b>IBR Roofing Zincal</b>	0,25 x 925	1,41	1	2 tons
	0,35 x 925	1,86	1	2 tons
	0,40 x 925	2,97	1	2 tons
	0,47 x 925	3,49	1	2 tons

IBR Roofing Colour	Size	Mass per Meter	Length	Bundle size
Charcoal Grey	0,5 x 925	3,71	1	2 tons
Azure Blue	0,5 x 925	3,71	1	2 tons
Kalahari Red	0,5 x 925	3,71	1	2 tons
Fish Eagle White	0,5 x 925	3,71	1	2 tons
Traffic Green	0,5 x 925	3,71	1	2 tons



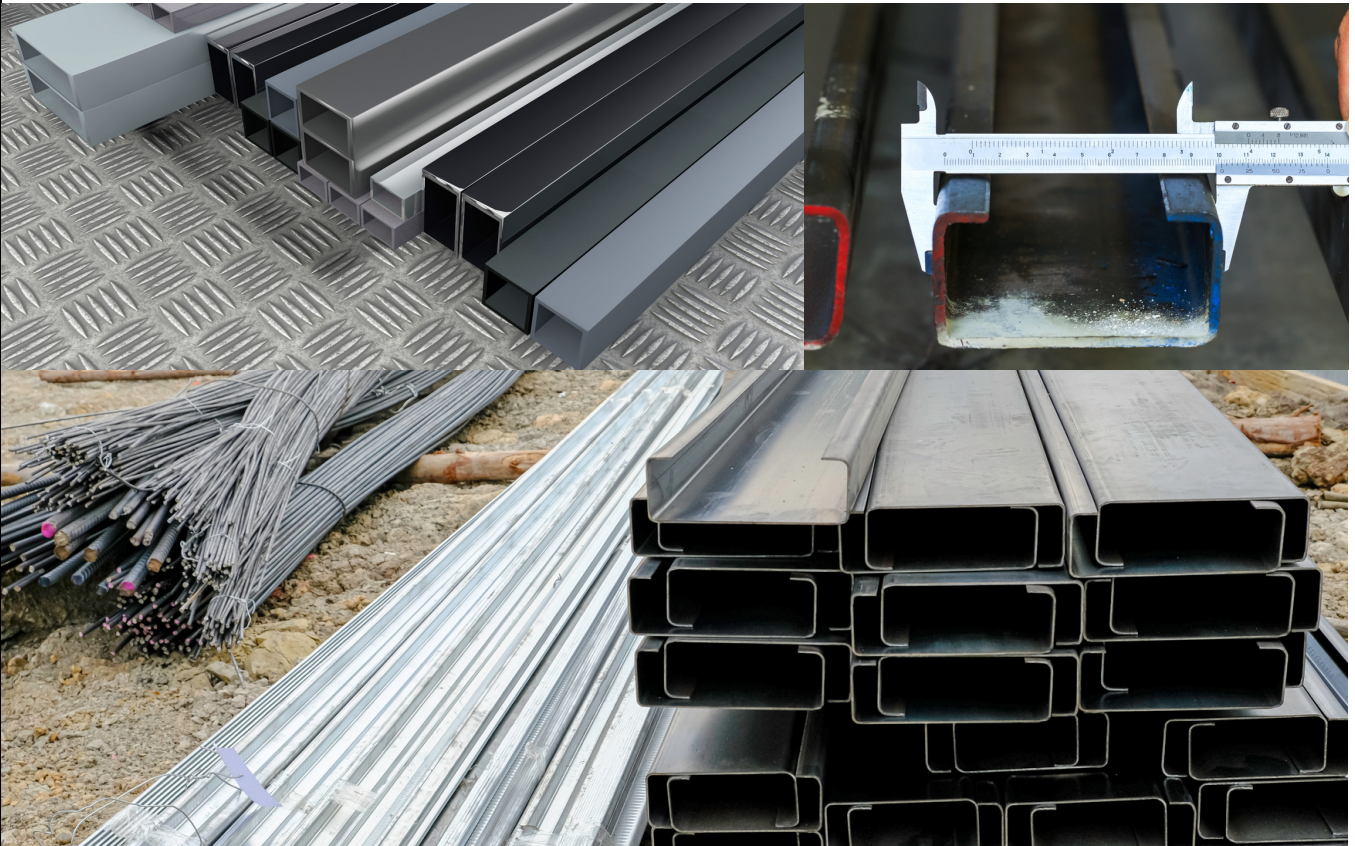
## OPEN SECTIONS

A comprehensive range of open sections available in both hot rolled or galvanized finish are provided in lengths ranging from 6m to 12m.

Both hot rolled and galvanized finish offered between 2.0mm and 2.8mm in thickness.

Materials: SAE1006 / SAE1008 / S235 / S275 / S355

Lip Channel	Size	Gauge	Mass per Meter	Standard Lengths
LC 2.0x75x50x20	Hot Rolled	2	3,14	6m
LC 2.0x75x50x20	Hot Rolled	2	3,14	9,145m
LC 2.0x100x50x20	Hot Rolled	2	3,53	6m
LC 2.0x100x50x20	Hot Rolled	2	3,53	9,145m
LC 2.0x125x50x20	Hot Rolled	2	3,93	6m
LC 2.0x125x50x20	Hot Rolled	2	3,93	9,145m
LC 2.0x150x50x20	Hot Rolled	2	4,32	6m
LC 2.0x150x50x20	Hot Rolled	2	4,32	9,145m



### Markets and Application:

Construction, hardware, roofing and manufacturing.

### Additional Products:

- Carbon Steel Plate and Sheet (Hot Rolled Galvanized and Cold Rolled)
- Abrasion Resistant and High Strength Plate: 400 - 500 BHN, 690 MPa, S355J2+N
- Thermo-Mechanical Coil: 700MPa
- High Alloy Forged Round Bar
- Seamless Pipe
- Coated Coils
- Structural Steel Columns, Beams and IPE
- Taper and Parallel Flange Channel
- Flat Bar, Round Bar, Square Bar and Angles
- Reinforcing Bar
- Wire Rod






# GET IN TOUCH WITH US

---


## Phone :

 (+27)11 669 0940

## Website :

 [www.etgworld.com/falconsteel](http://www.etgworld.com/falconsteel)

## Address:

 *62 Wierda Road East, Wierda Valley  
Sandton, Gauteng  
South Africa, 2191*

## Disclaimer

Falcon Steel (Pty) Ltd. has made every effort to ensure the information and data provided in this brochure is accurate to their knowledge and at the time of print and distribution. Falcon Steel (Pty) Ltd. does not accept any responsibility for any misinterpretation or inaccuracies in data content.

